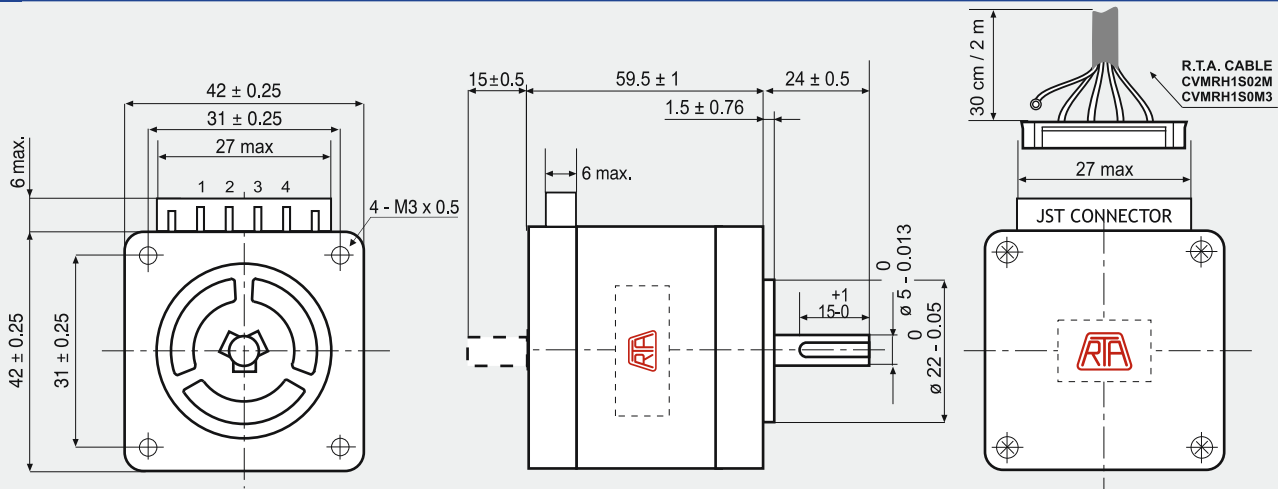
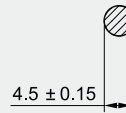


# RH 1S3M

## Dimensions (Unit:mm)



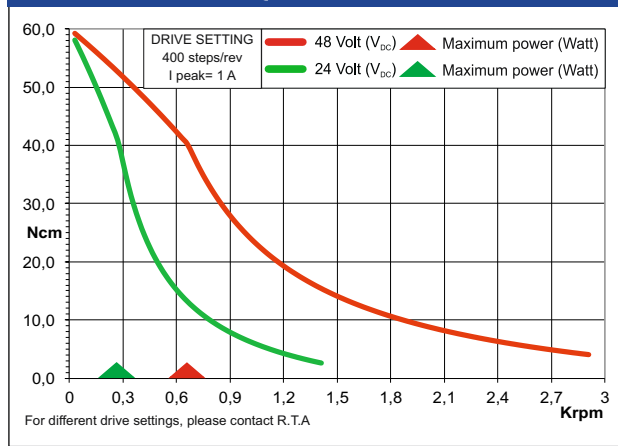
MOTOR CONNECTOR IS JST MOD. PHR-11 POLES MALE.  
 FOR CONNECTION USE JST MOD. PHR-11 FEMALE CONNECTOR AND  
 MOD. SPH-002T-P0.5S CONTACTS.  
**NOTE:** RH1S (RS) MOTORS NEED CVMRH1S02M OR  
 CVMRH1S0M3 R.T.A. CABLES. CONTACT R.T.A. FOR FURTHER DETAILS.



## FEATURES

MODEL	RH 1S3M (RH 1S3M-RS)
BASIC STEP ANGLE	1.8°
BIPOLAR CURRENT (Amp)	1.0
UNIPOLAR CURRENT (Amp)	
RESISTANCE (Ohm)	6.5
INDUCTANCE (mH)	16
BIPOLAR HOLDING TORQUE (Ncm)	80
UNIPOLAR HOLDING TORQUE (Ncm)	
ROTOR INERTIA (Kg <sup>m</sup> ² x 10 <sup>-7</sup> )	94
THEORETICAL ACCELERATION (rad x sec. <sup>-2</sup> )	85100
BACK E.M.F. (V/Krpm)	80
MASS (Kg)	0.51
PROTECTION DEGREE	IP40
LEADS CODE	V

## TORQUE/SPEED CURVE



Codes between brackets refer to double shaft models.

**R.T.A. MOTOR CABLE**  
 CVMRH1S02M  
 CVMRH1S0M3

30 cm / 2 m

(4/B-) BROWN  
 (3/B) YELLOW  
 (2/A-) WHITE  
 (1/A) GREEN

27 max

## Suggested R.T.A. drive series: BSD, CSD, FLEX-DRIVE



R.T.A. s.r.l.  
 Via E. Mattei - Fraz- Divisa  
 27020 Marcignago (PV) (Italy)  
 T +39.0382.929.855  
 F +39.0382.929.150  
 www.rta.it

R.T.A. Deutschland GmbH  
 Bublitzstrasse 34, 40599  
 Duesseldorf (Germany)  
 T +49.211.749.668.60  
 F +49.211.749.668.66  
 www.rta-deutschland.de

R.T.A. IBERICA  
 C/Generalitat 22, Local 1  
 08850 Gava - Barcelona (Spain)  
 T +34 936.388.805  
 F +34 936.334.595  
 www.rta-iberica.es

R.T.A. INDIA Pvt  
 Teerth Business Center 3<sup>rd</sup> Floor, Unit No. 7,  
 Block EL-15, MIDC Bhosari Pimpi-Chinchwd,  
 Pune 411026 (India)  
 Tel. +91 9422507445  
 www.rta-india.in